

# PROJECT SATELAI

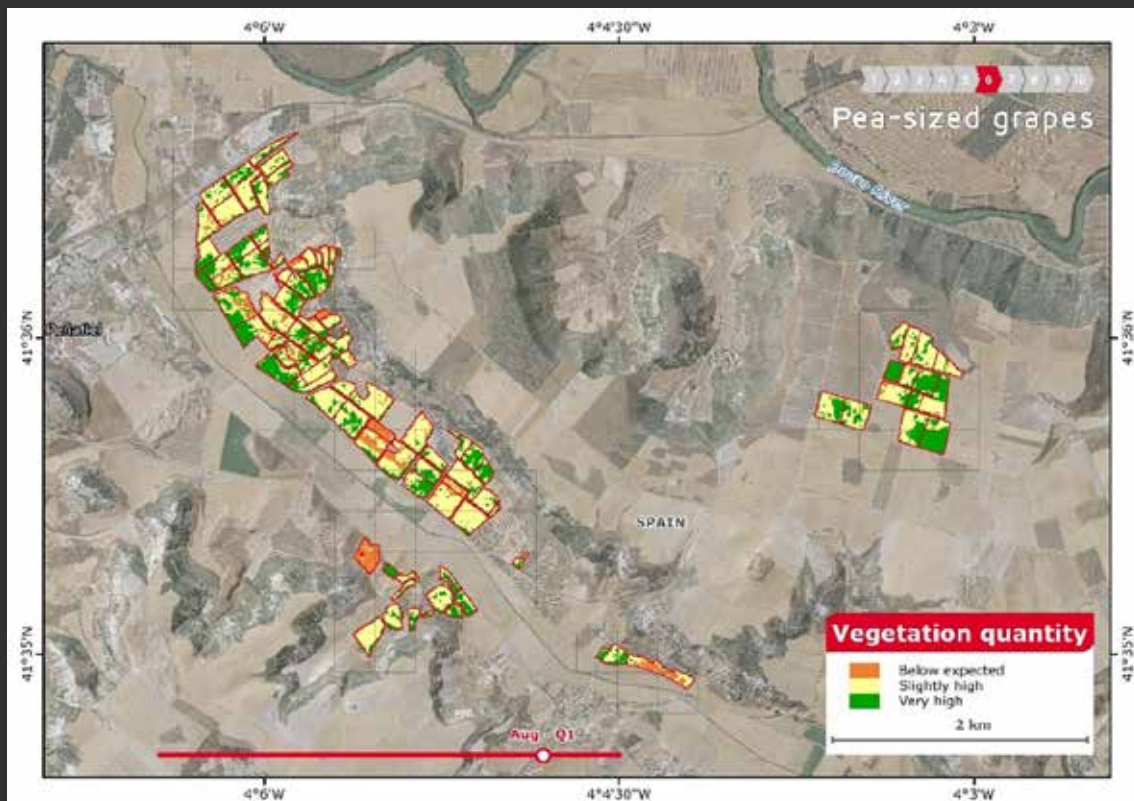
## Estimation of grape harvest yield using predictive models from satellite imagery data

The objective of the project is to estimate the yield of grape production for winemaking in the vineyards owned by the company, through the implementation of connectivity solutions based on the analysis of data provided by satellite images and weather stations.

In this way, the integration and management of all the aforementioned information in the field data platform will enable the winery to have a predictive model to estimate wine production annually and prior to the harvest. These actions will contribute to the digitalization of PAGO DE CARRAOVEJAS by bringing forward the gauging or estimating the grape yield in the vineyard, which is currently done manually, as well as establishing the necessary corrective actions to adapt the grape production of each campaign to the quality required by the company.

BENEFICIARY: Pago de Carraovejas

COLLABORATING ENTITY: GMV



PAGO DE CARRAOVEJAS  
FINCA Y BODEGA

# PROJECT SATELAI

## SUPPORT DETAILS:

- Aid: Line of incorporation of ICTs in SMEs.
- Project code: 06/18/VA/0163
- Organization: Instituto para la Competitividad Empresarial de Castilla y León, (ICE), co-financed by the European Regional Development Fund - FEDER
- Budget
  - Total: 28.926.00€euros
- Amount of aid.
  - 60%

## DURATION:

- Start date: 01/06/2024
- End date: 31/09/2028



PAGO DE CARRAOVEJAS  
FINCA Y BODEGA